



2nd Quarter Direct Services Tribes Advisory Committee

February 13, 2018

Overview

- Introductions
- CHAP Background
- CHAP TAG
- National CHAP Framework
- Quality Improvement
- Discussion
- Next Steps

Overview: Meeting Objectives

To provide an update on the establishment of a national Community Health Aide Program (CHAP) through the establishment of a CHAP Tribal Advisory Group (TAG) and workgroups.

CHAP Team Leads



Chris Halliday, DDS, MPH, RADM (ret.)

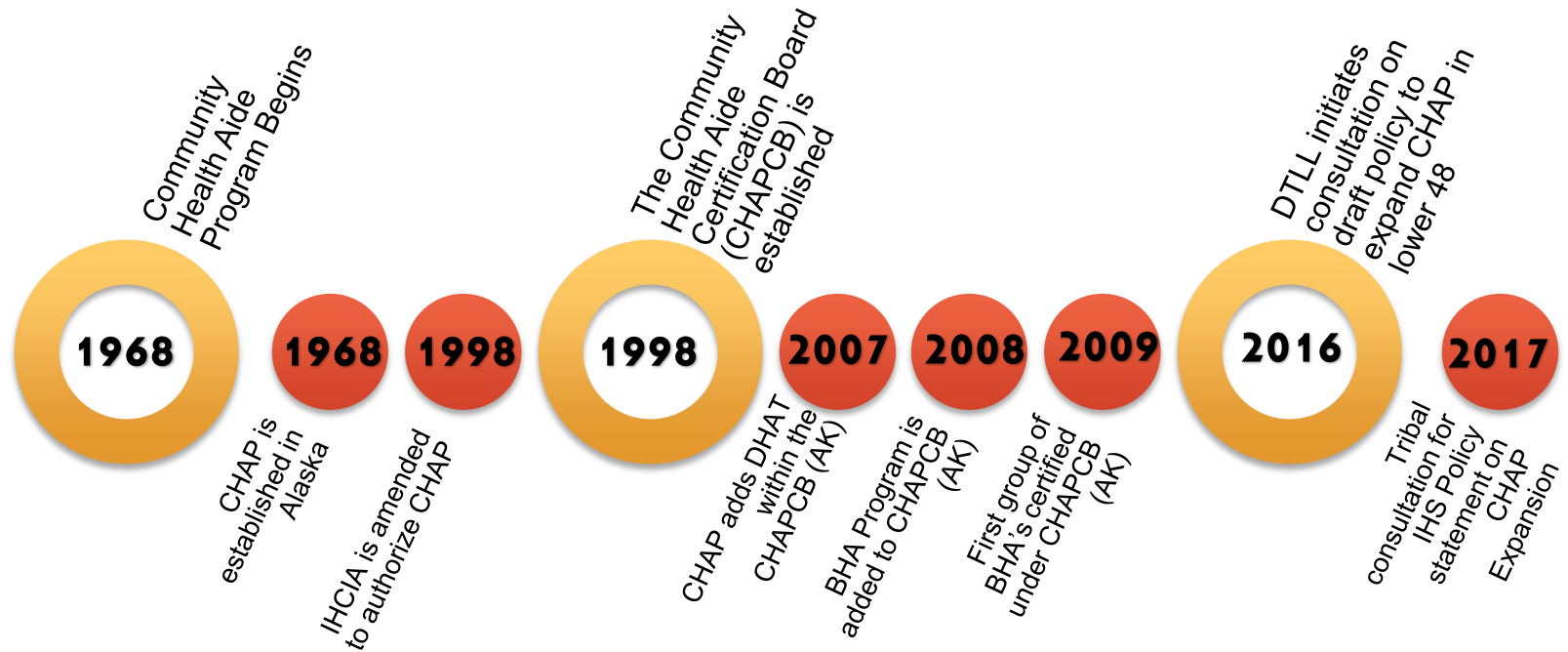
Serves as Deputy Director, Indian Health Service Division of Oral Health, with an emphasis on oral health promotion/disease prevention and the Dental Health Aide Lead. Prior to returning to the IHS in 2017, served as an Assistant Surgeon General, Chief of Staff to the U.S. Surgeon General and Chief Dental Officer of the United States Public Health Service



Minette C. Galindo, MPA

Serves as the Native Youth and Behavioral Health Aide program lead within the Division of Behavioral Health where she manages programming and develops strategies to promote positive development and build resiliency amongst Native Youth. Prior to IHS, she worked for the Centers for Disease Control & Prevention working in community health assessments, social determinants of health, and environmental health.

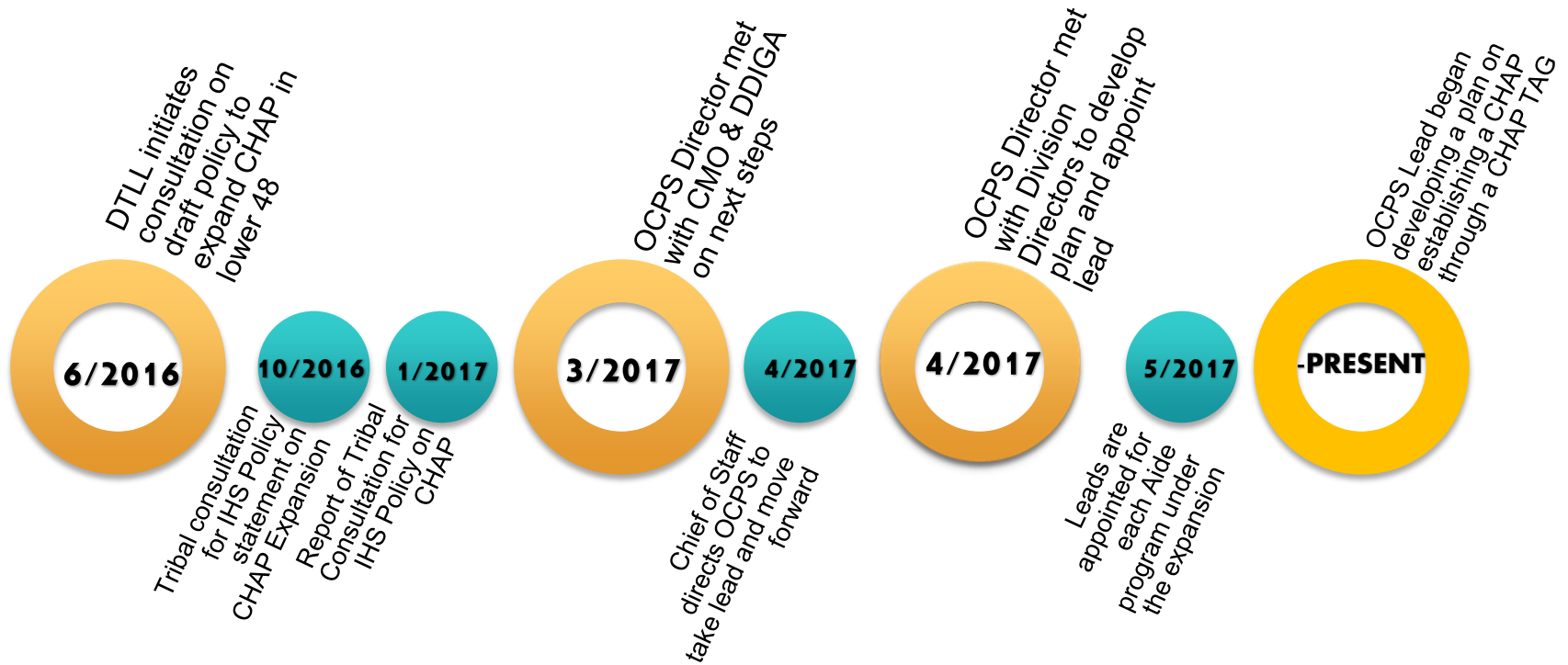
National Timeline



Agenda Tracker



IHS Internal Timeline

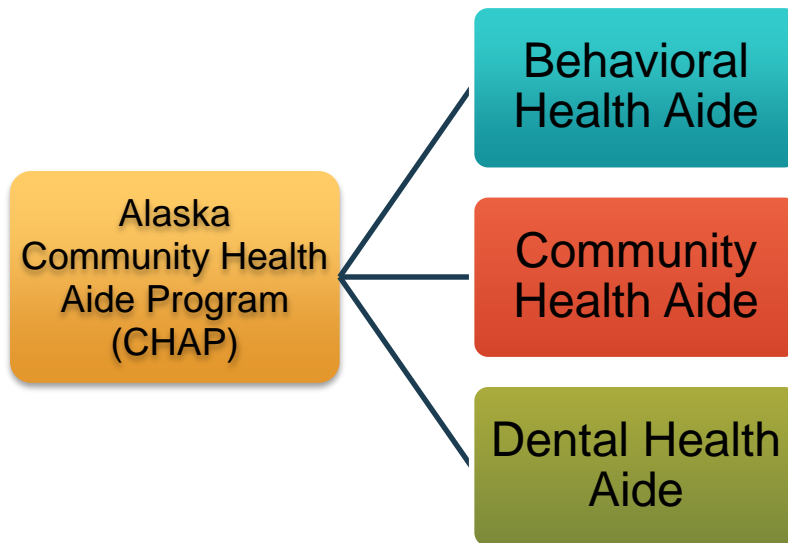


Agenda Tracker



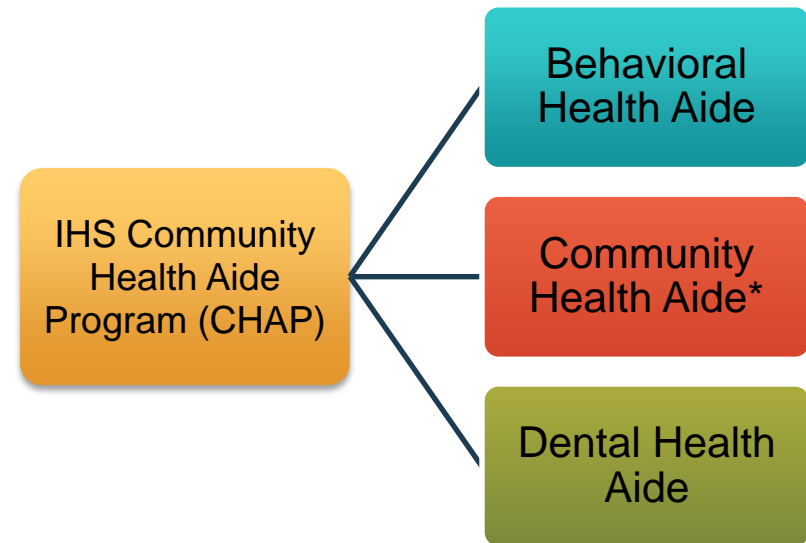
Alaska CHAP & IHS CHAP

Alaska CHAP



IHS National CHAP

(proposed)



*Specific to only Alaska



CHAP TAG Anatomy

Executive Sponsors

- **WHO:** CMO, DDIGA, DFO
- **WHAT:** Provide strategic leadership and oversight to the Federal officials

Tribal Advisory Group

- **WHO:** (1) Tribal Leader per Area, (1) TSGAC Rep, and (1) DST Rep for a total of (14) Tribal Leaders
- **WHAT:** Provide input, feedback, leadership, direction, and guidance to workgroup

Federal Officials

- **WHO:** OCPS Director, DOH Director*, DBH Director*, Area Directors, Area CMO, Area BHC, Area Dental Consultants, OGC
- **WHAT:** Subject matter, policy, and legal experts

- **WHO:** CHAP Leads, Tribal Designees, federal subject matter experts
- **WHAT:** Provide program specific guidance on the establishment of CHAP



Agenda Tracker



CHAP TAG Anatomy



Agenda Tracker



CHAP TAG Meeting

- **When:** March 2018
- **Where:** Phoenix, AZ
- **Tentative Schedule:**
 - Presentations/Panel Discussions
 - Listening Sessions
 - Advisory Group Meeting

*Tentative based on contracts, acquisition policy, and space suitability factors

Agenda
Tracker

Introductions

Overview

CHAP
Background

CHAP TAG

National
CHAP
Framework

Quality
Improvement

Discussion

Next Steps

National CHAP Framework

Phase I: Assessment

What does the system currently look like?



Phase II: Design

What will the program look like?



Phase III: Implementation

How do we roll it out?



Phase IV: Evaluation

How well is the program performing?

Agenda
Tracker

Introductions

Overview

CHAP
Background

CHAP TAG

National
CHAP
Framework

Quality
Improvement

Discussion

Next Steps

National CHAP Framework

- Ask the “Quality Questions”
- Identify cross-cutting program Components for CHAP TAG Meeting using themes from consultation, listening sessions, and public feedback
- Identify unique program components for BHA and DHA Programs

Quality Improvement

- Aim Statement
 - By end of calendar year 2020, a National Community Health Aide Program (CHAP) that includes the Alaska CHAP will be established, as measured by the functioning of a Tribal Advisory Group (TAG), established policies codifying the program including a national certification board, program standards and procedures, and scope of practice for each category in the program, and the first cohort of trainees selected.





Feedback & Input
Discussion



Next Steps

- Host meeting
- Establish workgroups
- Work on priorities
- Reconvene CHAP TAG to continue moving forward

Agenda
Tracker

Introductions

Overview

CHAP
Background

CHAP TAG

National
CHAP
Framework

Quality
Improvement

Discussion

Next Steps



Resources

- General
 - [IHS Dear Tribal Leader Letter \(6/2016\)](#)
 - [IHS CHAP Press Release \(1/2017\)](#)
 - [IHS Policy Statement on CHAP Expansion](#)
 - [Alaska CHAP](#)
- Behavioral Health Aide
 - [Behavioral Health Aides: A Promising Practice for Frontier Communities](#)
 - [An Action Plan for Behavioral Health Workforce Development](#)
 - [Alaska Behavioral Health Aide Program](#)
- Dental Health Aide
 - [Alaska Dental Health Aide Program](#)
 - [Sample Dental Therapy Curriculum for Community Colleges](#)
 - [Current Use of DHATs in Indian Country and Beyond](#)

Contacts

- Minette Galindo (OCPS/DBH)
 - Behavioral Health Aide Program
 - Minette.Galindo@ihs.gov
- Dr. Chris Halliday (OCPS/DOH)
 - Dental Health Aide Therapy Program
 - Christopher.Halliday@ihs.gov